

AENTEC Groupe



Enhanced virtual tour of an industrial site's facilities



How can the knowledge of industrial facilities be made more reliable?



International coverage:



Algérie



Angleterre



Maroc



Inde



Martinique



Nigéria



Japon



Angola



Congo



Ghana



Allemagne



Gabon



Guadeloupe



La Réunion



Arabie Saoudite



Pays-Bas

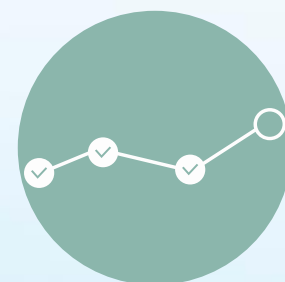


Guyane



Afrique du Sud

OUR VISION

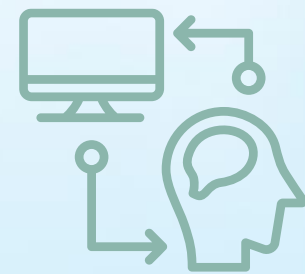


The industry is evolving, human expertise is retiring, teams are changing, but risks remain.



Our solution enables the digitalization and securing of knowledge about industrial facilities, ensuring it remains accessible and usable at all times by operations, maintenance, or engineering teams

WHY THIS SOLUTION?



In an industrial context where facility mastery, intervention safety, and knowledge transfer are becoming major challenges, our Enhanced Virtual Tour with Feedback (VVE-REX) solution addresses a fundamental need:

“To extract experience from individuals' minds and integrate it into a sustainable tool accessible to all.”



01

VIRTUAL TOUR OF REAL FACILITIES

- 360° or panoramic photography of existing industrial facilities.
- Immersive navigation through workshops, units, and hazardous areas.
- Remote access via a simple and secure interface, available from a smartphone, tablet, computer, or any connected device.

02

CONTEXTUALIZED INFORMATION POINTS

For each key piece of equipment (pump, valve, column, reactor, heat exchanger, support structures, steel framework, piping network...), it is possible to add:

- Integrated PDF datasheets (Isos, P&IDs, OP7, etc.)
- Maintenance procedures
- Assembly/disassembly manuals
- Associated drawings
- Videos



03

Integration of Feedback (REX) Videos

- Illustration of real-world cases: assembly errors, incidents, fires, recurring failures
- Educational videos demonstrating best practices
- Capitalization on past events to prevent their recurrence

04

TRAINING & SKILLS TRANSFER

- Tool to support on-site training for new employees
- Preserving the site's technical memory

==>Continued access to expertise even after the retirement of long-standing reference personnel

A SCALABLE TOOL TO ENHANCE INDUSTRIAL PERFORMANCE

Our Enhanced Virtual Tour is a scalable technological foundation that can be tailored to the specific needs of each industrial site.



Predictive maintenance
(connection with maintenance programs)



Display KPI Real Time (IOT)



Remote audit and inspection



Internal training



Safety induction



PDP

TURNKEY APPROACH BY AN ENGINEERING FIRM SPECIALIZED IN INDUSTRY

As an engineering consultancy, we operate in the following areas:



On-site surveys

1

Creation of the
virtual tour

2

Integration of client
documents and
videos

3

Secure deployment
of the tool at the
operator's site

4

User training

5

EXAMPLE OF EXPERIENCE FEEDBACK (REX)

Example of a highly significant case involving a
Pompe P408

During a maintenance operation, a flat gasket was mistakenly installed instead of an RTJ gasket, despite it being specified for this critical application.

FAILED

==> Result :

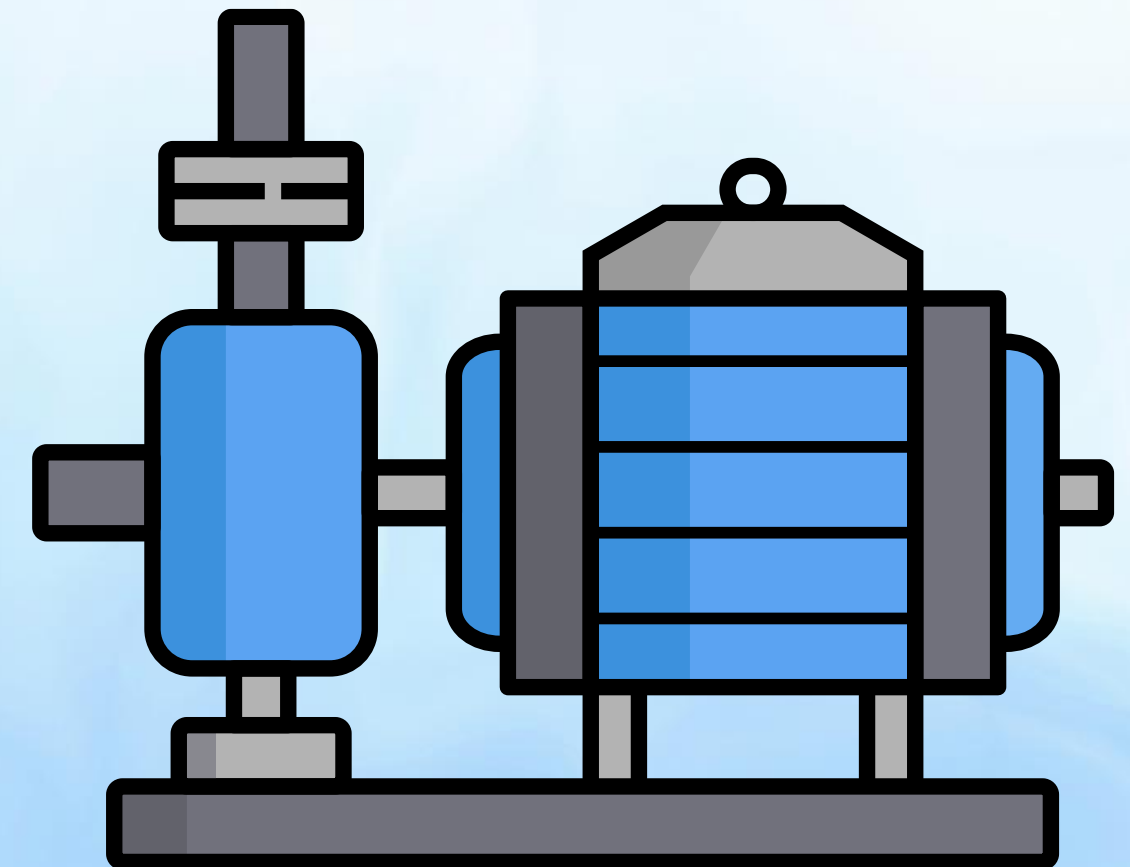
- During the pump restart, a fire broke out.
- The fire burned the entire nearby electrical cable network.
- The pump was rendered completely inoperative. The facility experienced a four-week production shutdown.
- The economic impact amounted to several hundred thousand euros in lost operating revenue



OUR SOLUTION COULD HAVE PREVENTED THIS INCIDENT

:Thanks to our Enhanced Virtual Tour, the maintenance teams could have, with a single click on pump P408:

- View the correct gasket assembly procedure. Access a video illustrating the risks of improper installation.
- Consult the technical datasheet specifying the required gasket type (RTJ). Review the experience feedback (fire incident) related to this specific equipment.
- Thus, critical information no longer relies on individual memory but is directly embedded in the virtual tour tool.



BENEFITS FOR THE COMPANY

Sécurité & prevention

- Minimize human errors
- Secure interventions
- Reduce the risk of major incidents

Improved reliability of installations

- Instant access to technical documentation
- Integrated procedures and instructional
- Transfer of field experience into the tool

Knowledge retention

- Site's technical knowledge preserved
- Experience and know-how retained, even after employees leave
- Field experience transferred into the tool

Cost reduction

- Fewer incidents = less production downtime
- Optimized maintenance costs
- Reduced operating losses due to errors

DISCOVER VIRTUAL TOUR:

https://visite.aentecaltitude.xyz/pompe_cuveold/

<https://visite.aentecaltitude.xyz/Serveraentec/>

<https://visite.aentecaltitude.xyz/BIC/>

THANKS FOR YOUR WATCHING!

IF YOU WANT MORE INFORMATIONS :

Aentec Altitude

2 rue de Valmy, Le Havre FRANCE

l.lebidois@aentec-groupe.com

(+33)07.49.61.39.38

Aentec Normandie

2 rue de Valmy, Le Havre FRANCE

n.echtioui@aentec-groupe.com

(+33)06.83.02.79.36